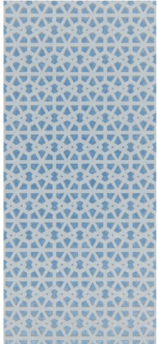


KALI
 Zintra Patterns



Texture: 3
 Lustre: 1
 Transparency: 1

DESCRIPTION / FEATURES	
	<p>Baresque's popular acoustic solution has undergone a style update to bring you Zintra Patterns. Experience our range of classic to contemporary screen designs cut out of Zintra. The perforated panel can be installed as is or matching / contrasting Zintra backer added to create a unique look for walls or ceilings. In just the one product you will find style, texture, contrast, depth and the added benefit of sound absorption to create a harmonious environment.</p> <ul style="list-style-type: none"> * Increased noise absorption * Easy installation * Broad range of neutral and bright colours * Co-ordinates with Baresque's range of screen designs <p>Find out more about the Benefits of Zintra and its NRC rating on the DOWNLOAD tab.</p>

HOW TO SPECIFY	<ol style="list-style-type: none"> 1. Design 2. Size 3. Design Colour 4. Backing Colour
COMPOSITION	Zintra Acoustic Panel - 100% Polyester
FINISHES AVAILABLE	Zintra Panel - Matt. Check out the Zintra 12mm colour range here or the DOWNLOAD tab for a pdf.
SHEET SIZE	<p>610mm x 610mm</p> <p>1220mm x 610mm</p> <p>2745mm x 1220mm</p> <p>Pattern only - 12mm</p> <p>Pattern later on backer - 24mm</p>
INDOOR/OUTDOOR	Indoor only
WET AREAS	No
SUGGESTED INSTALLATION	<p>Check out the DOWNLOAD tab for a complete Handling and Installation guide.</p> <p>Be sure to support the panel during installation to avoid bowing or creasing.</p> <p>Adhere to substrate using contact adhesive, Liquid Nails or Z clips.</p> <p>Panel can also be mechanically fixed using details similar to glass fittings.</p>

LEAD TIME	2-3 weeks + 1 week for Western Australia
CUSTOMISABLE	Design - Yes Colour - Yes Contact Baresque for details
THERMOFORMABLE	No
FIRE	Zintra
ADDITIONAL COMMENTS	Not suitable as a free standing product. NRC - 0.45 - 0.95
FABRICATION	Stanley knife if required
REFINISHABLE	No
CARE INSTRUCTIONS	Zintra
ENVIRONMENTAL INFORMATION	Zintra
FIRE RATING	Zintra Acoustic Panel was tested in accordance with AS ISO 9705 " 2003 for the purpose of determining the Group Number classification as required by the Building Code of Australia for the control of fire spread on interior wall and ceiling linings. The result achieved was: Classification - Group 1 Specific Extinction - Less than 250m ² /kg

SUPPLIED AS	Sheet ready to install
CARE INSTRUCTIONS	<p>Remove spills immediately using damp, clean cloth.</p> <p>Dab Zintra with a clean, soft white cloth dampened with a mild solution of liquid detergent and warm water. Repeat using only clean water, then pat dry with a lint free cloth.</p> <p>Avoid using wax polishes, solvents or concentrated abrasives.</p> <p>For more difficult stains, dampen a soft white cloth with a solution of household bleach (10% bleach / 90% water). Dab gently.</p>

Repeat using only a clean, water dampened cloth to remove bleach concentration then pat dry with a lint free cloth.

Always test in an inconspicuous area first. If care instructions don't deliver the expected results, cease cleaning method immediately and contact Baresque for assistance.



baresque.com.au
e info@baresque.com.au
p 1300 306 399

ENVIRONMENTAL INFORMATION	Easily recycled through standard recycling channels
----------------------------------	---